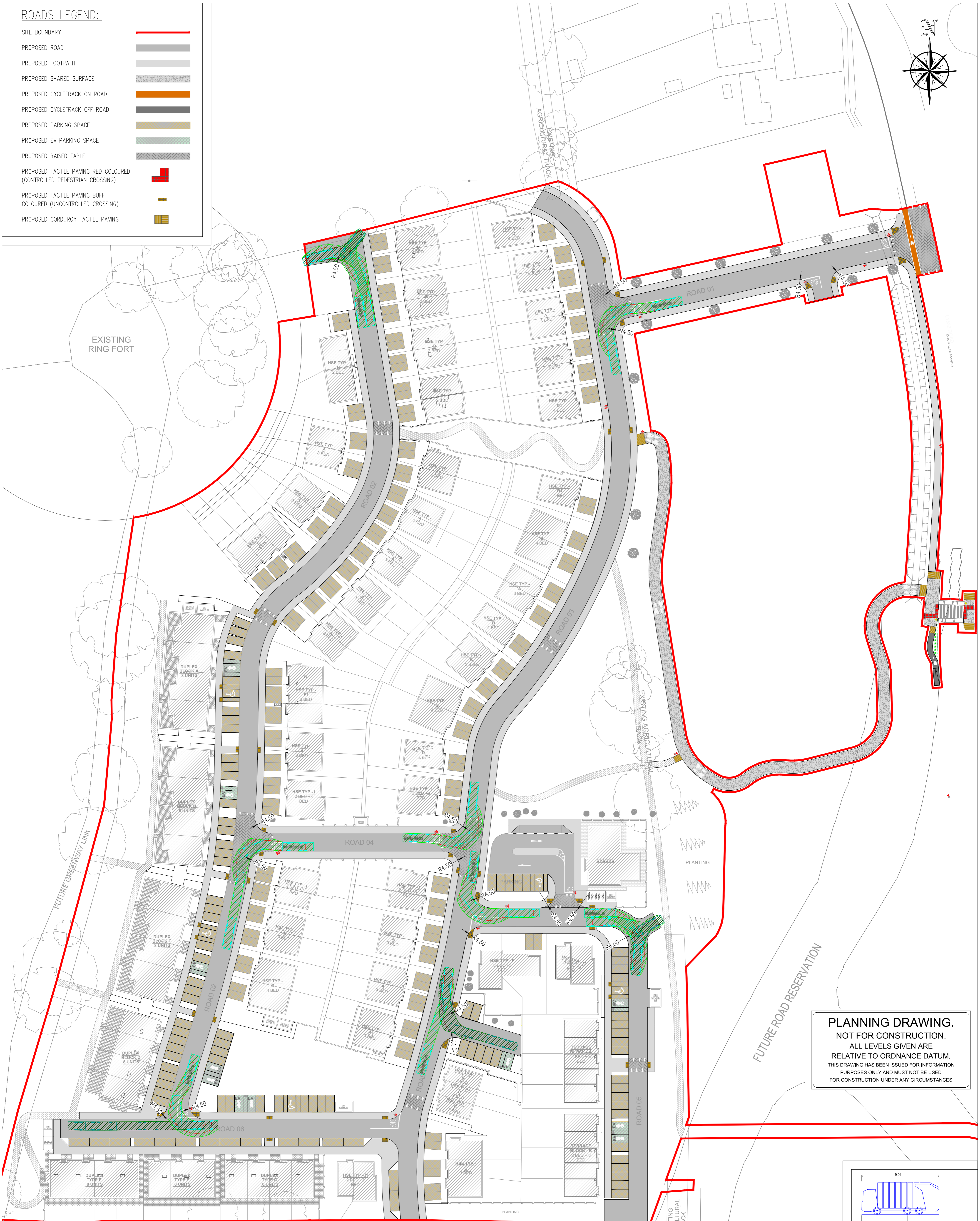
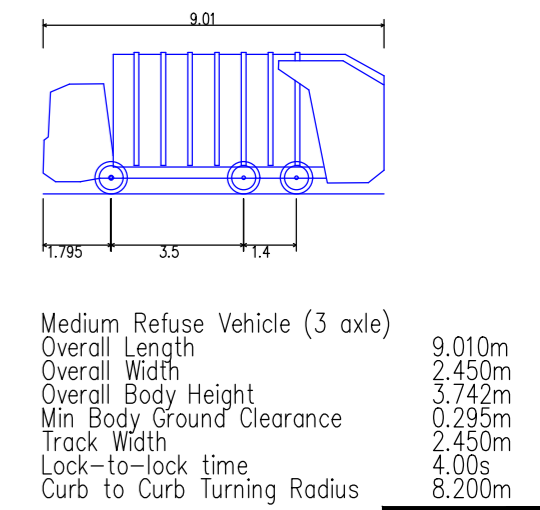


ROADS LEGEND:

- SITE BOUNDARY
- PROPOSED ROAD
- PROPOSED FOOTPATH
- PROPOSED SHARED SURFACE
- PROPOSED CYCLETRACK ON ROAD
- PROPOSED CYCLETRACK OFF ROAD
- PROPOSED PARKING SPACE
- PROPOSED EV PARKING SPACE
- PROPOSED RAISED TABLE
- PROPOSED TACTILE PAVING RED COLOURED (CONTROLLED PEDESTRIAN CROSSING)
- PROPOSED TACTILE PAVING BUFF COLOURED (UNCONTROLLED CROSSING)
- PROPOSED CORDUROY TACTILE PAVING



PLANNING DRAWING.
 NOT FOR CONSTRUCTION.
 ALL LEVELS GIVEN ARE
 RELATIVE TO ORDNANCE DATUM.
 THIS DRAWING HAS BEEN ISSUED FOR INFORMATION
 PURPOSES ONLY AND MUST NOT BE USED
 FOR CONSTRUCTION UNDER ANY CIRCUMSTANCES



Drumlark

NOTES

1. For setting out refer to Architect's drawings.
2. This drawing to be read in conjunction with all other Architectural and Engineering drawings and all other relevant drawings and Specifications.
3. **DO NOT SCALE THIS DRAWING.** Use figured dimensions only.
4. No part of this document may be reproduced or transmitted in any form or stored in any retrieval system of any nature without the written permission as copyright holder except as agreed for use on the project for which the document was originally issued.
5. Ordnance Survey Ireland Licence Number EN 0074024

Rev. No.	Date	REVISION NOTE	Dwn. By	Chkd. By
P1	17.07.2023	ISSUED FOR STAGE 2	SC	NB
P2	22.02.2024	ISSUED FOR PLANNING	SC	LJ

Architect	Michael Fitzpatrick (MFA)
Project	Drumlark Development Co. Cavan
Title	Swept Path Analysis Refuse Vehicle
Dwg. No.	D111-CSC-XX-XX-DR-C-0012
Date	June 2023
Dwn. by	SC
Chkd. by	JF
Apprv. by	NB
Scale	1:8500 @ A1
Revision	P2

CS Consulting Group
 DUBLIN | LONDON | LIMERICK

Head Office
 19-22 Dame Street, Dublin 2.
 T: +353 (0)1 5480863
 e: info@csconsulting.ie
 w: www.csconsulting.ie

Quality Environment I.S. EN ISO 9001:2008
 Energy I.S. EN ISO 14001:2004
 Health & Safety I.S. EN ISO 50001:2011
 OHSAS 18001:2007